

Swiss TPH



Swiss Tropical and Public Health Institute
Schweizerisches Tropen- und Public Health-Institut
Institut Tropical et de Santé Publique Suisse

Human and Animal Health Research Unit

Enhancing joint delivery of human and animal health services in remote areas

Esther Schelling, Swiss Tropical and Public Health Institute

Mahamat Bechir, Centre de Support en Santé Internationale au Tchad

Daugla Doumagoum Moto, CSSI

Jakob Zinsstag, Swiss Tropical and Public Health Institute

Remote rural zones

- Vulnerable to exclusion to markets, education and health and veterinary services
- Rarely outreach services for those living far away from health facilities
- Hardship of livelihoods
- Mobility and dispersion in grasslands



Transdisciplinarity: Improving the relevance of research and effectiveness of interventions?

Medicine

Society

Humanities

interdisciplinary

Science

transdisciplinary



Multi-faceted health seeking patterns, Cultural preferences



Workshop 2002



Workshop 1998



Workshop 1999



Workshop 2005



Joint human and animal vaccination campaigns



Validation process with population

Demographic and health surveillance



National programme on social service provision

PROGRAMME d'Appui Intersectoriel AUX COMMUNAUTES NOMADES EN REPUBLIQUE DU TCHAD
 MINISTRE DE LA PROMOTION ECONOMIQUE ET DU DEVELOPPEMENT
 MINISTRE DE L'ELEVAGE
 MINISTRE DE LA SANTE PUBLIQUE
 MINISTRE DE L'ENSEIGNEMENT SUPERIEUR ET DE L'EDUCATION
 MINISTRE DE L'INTERIEUR ET DE L'AMENAGEMENT DU TERRITOIRE



AVANT PROJET
 Institut National de Recherche

juin 2005

Feasibility of joint human and animal vaccination services

- Using all existing infrastructure and personnel
- Joint vaccination in 1 of 3 vaccination rounds for children/women
- Project as facilitator

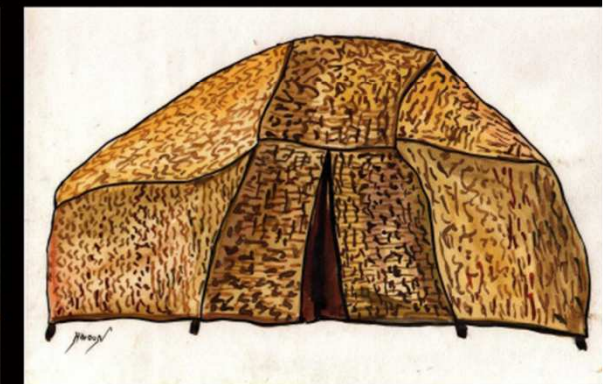
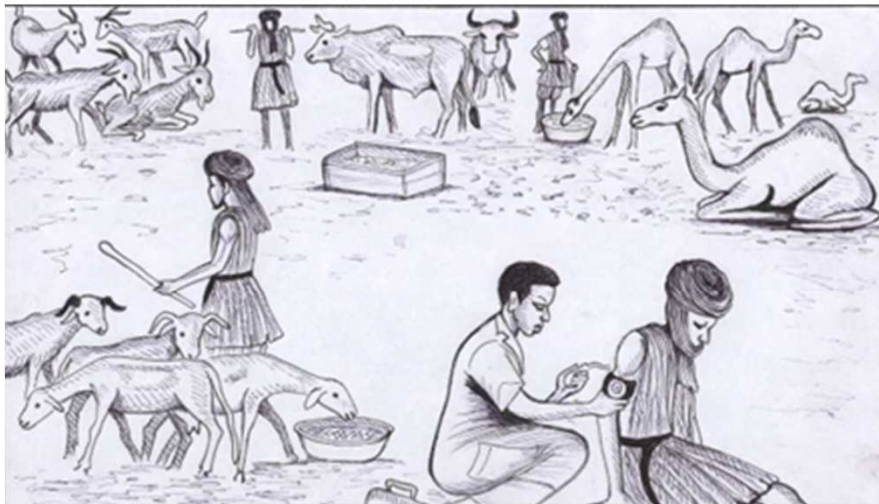


- Public health and veterinary authorities provide vaccines and are involved in monitoring



Appropriate information: demand-driven

- Collaboration with communities, local leaders and IEC specialists
- Pictograms and movies followed by discussions
- Training of community-based facilitators



Achieved vaccination coverage and costs

- 4'700 children and 7'400 women fully immunized, 136'000 livestock vaccinated
- High drop-out rates of children from first to third vaccination
- Each year, completed vaccination of 9% children and 19% women
- Public health sector reduces 15% of costs for infrastructure, cold chain and staff



Adapted access to health and veterinary services and going to scale

- Highly valued by nomadic communities – and veterinary and public health personnel
- Joint vaccination services as gateway for public health and veterinary services
- Going to scale at district and national level; experiences from other countries



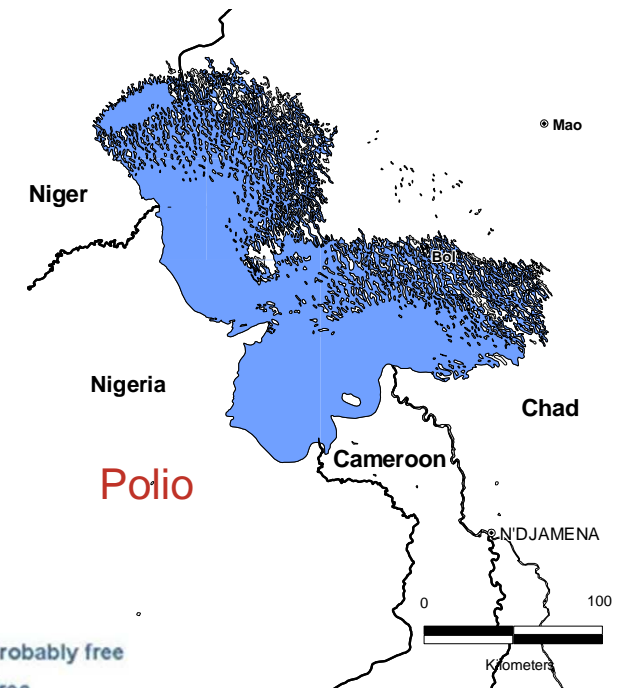
Mixed service of human and animal health in pastoral zones:

An innovative and promising experience



Remaining challenges of vaccination delivery

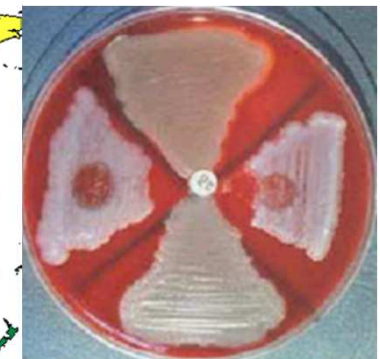
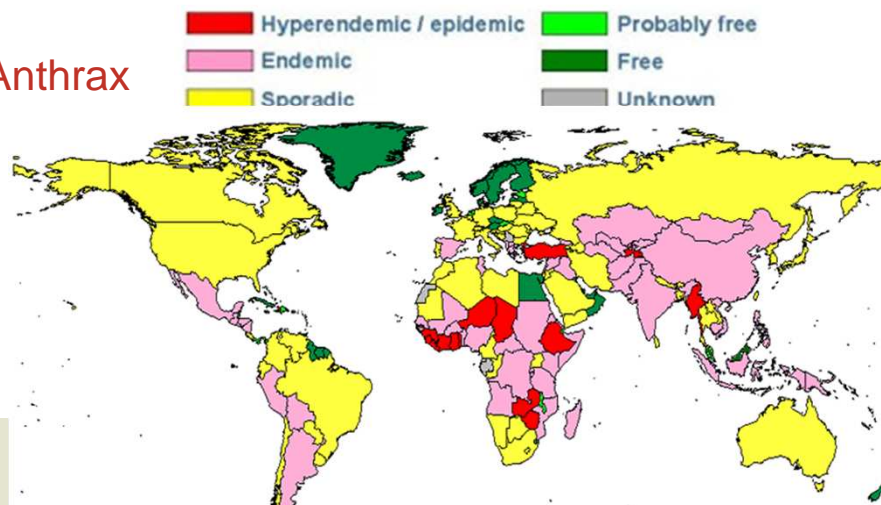
- Vaccination of children and women
 1. Cost-effective intervention
 2. Achieve higher coverages, particularly among hard to reach communities
- Vaccination of livestock
 - Central tool for control and elimination of contagious livestock diseases; including zoonoses
 - Independent control of vaccine production
 - Remaining pockets often in inaccessible pastoral zones



Rinderpest



Anthrax



Intersectoral services increase cross-over benefits



GIVS
Global Immunization
Vision and Strategy
2006-2015

+

- Joint health and veterinary vaccination programmes reduce operational costs and increase compliance of livestock owners
- Better use of professionals visiting remote communities
- Strengthening of services, especially at district level



Synergies and added value in face of financial constraints

- By optimizing limited logistical and human resources, public health and veterinary services can become more prepared and operational in responding to endemic and epidemic diseases
- Equity: neglected diseases mainly affect the poor and there is overlap and co-morbidity of multiple diseases
- Best use of synergies for interventions and information dissemination becomes increasingly important, particularly to reach communities in remote rural zones